

# When Tall Buildings Come to Town

Randall W. Hanifen, Ph.D., FIFireE

- Assistant Chief of Operations: West Chester (OH)
- President: Institution of Fire Engineers-USA Branch

# Speaker Background

- Operations Chief: West Chester (OH) Fire Department
- Associate Professor: American Public University System
- Principal Consultant/CEO: Hanifen & Associates, LLC
- President & IGA Rep: Institution of Fire Engineers-USA Branch
- Chair: International Association of Fire Chiefs-COS Section

# Objectives

- Discuss the transformation from Horizontal Highrise to Vertical
- Explain the Building and Plan Review Changes
- Cover operational transformations that fire department went through
  - Policies
  - Training
  - Equipment

# West Chester (OH) Transformation

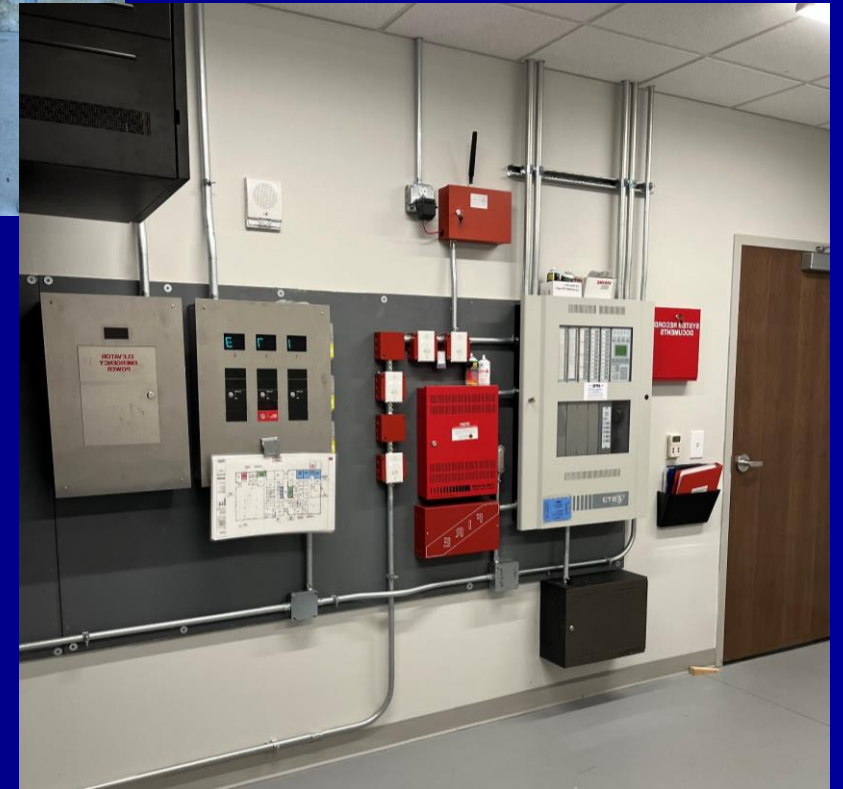


1980	23,553
1990	39,703
2000	54,895
2010	60,958
2020	64,830

West Chester is the **9th largest** place or municipality in the state of Ohio

# Plan Review

- Where is the fire command room
- Where are the elevator controls
- Where are the standpipe locations
- How does the building features interact with our operations



# Change Process

- Learn from the experts (HROC)
- Create polices that fulfill all needs
- Create job aids due to infrequent responses

Jersey City Fire Department  
477  
321 7th Ave  
ENGINE CO's: 1-2-3-4  
LADDER CO's: 1-2  
5th ALARM: ENGINES: 5-6-7  
LADDERS: 3-4

CMD  
15  
E 1-2  
L 1  
16  
E 3  
L 2  
S/E  
E 5  
L 3  
LOG  
E 4  
L 5



## 2<sup>nd</sup> Chief-Attack Branch Dir.

- Establish Fire Floor and division number
- Report to Attack Stairwell at Fire Floor
- Contact Divisions (Fire Floor, Floor Below, Floors Above) and establish communication
- Extinguish Fire on Fire Floor
- Primary Search of Fire Floor
- Primary search and check for extension on floor above
- Primary search and check for extension floor below
- Conduct Secondary Search on all 3 floors
- Relay benchmarks to command
  - Water on Fire
  - Primary Search Complete
  - Secondary Search Complete
- Maintain Adequate Standby Companies (Mirror fire floor)

## First Chief-Command

- Perform Size-up and Establish Command
- Announce Command Post Location
- Assign 1<sup>st</sup> FC to Fire Floor (Attack)
- Assign 2<sup>nd</sup> FC to Fire Floor (Attack)
- Assign 3<sup>rd</sup> FC to Fire Floor (Attack)
- Assign 2<sup>nd</sup> Chief to Fire Attack Branch
- Assign 1<sup>st</sup> Medic to Fire Floor (IRIC)
- Assign 3<sup>rd</sup> Chief to Lobby (Lobby Control)
- Assign 4<sup>th</sup> FC to Floor above Fire (Search)
- Assign 5<sup>th</sup> FC to Top Floor (Search)
- Assign 4<sup>th</sup> Chief to Upper Branch Director
- Assign 6<sup>th</sup> FC to Floor Below (On-Deck)
- Assign 7<sup>th</sup> FC to Floor Below (On Deck)

See Second Page



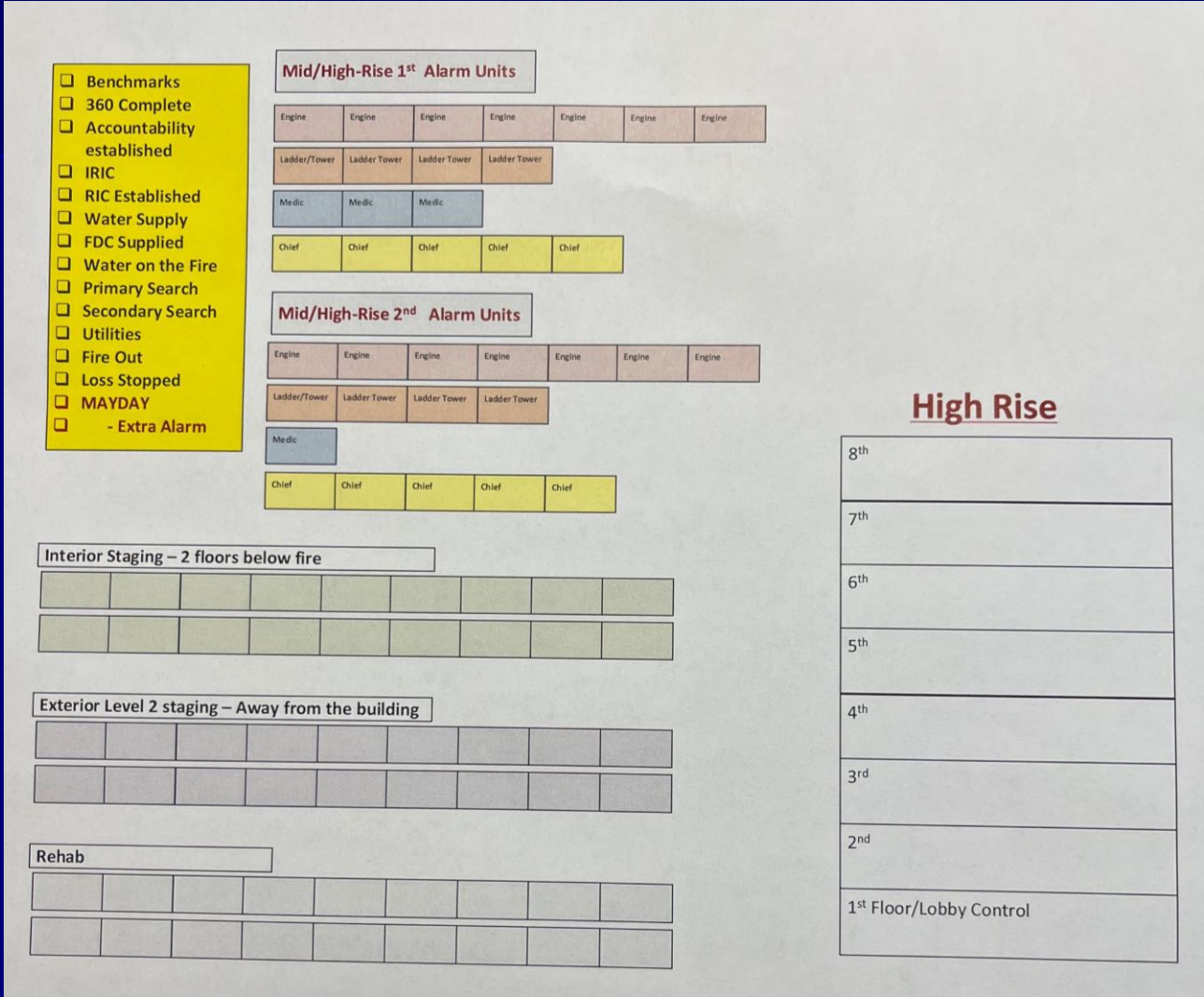
# Change Process

- Create tactics that support polices
- Purchase equipment to support tactics
- Train and Train some more!!



# Deployment

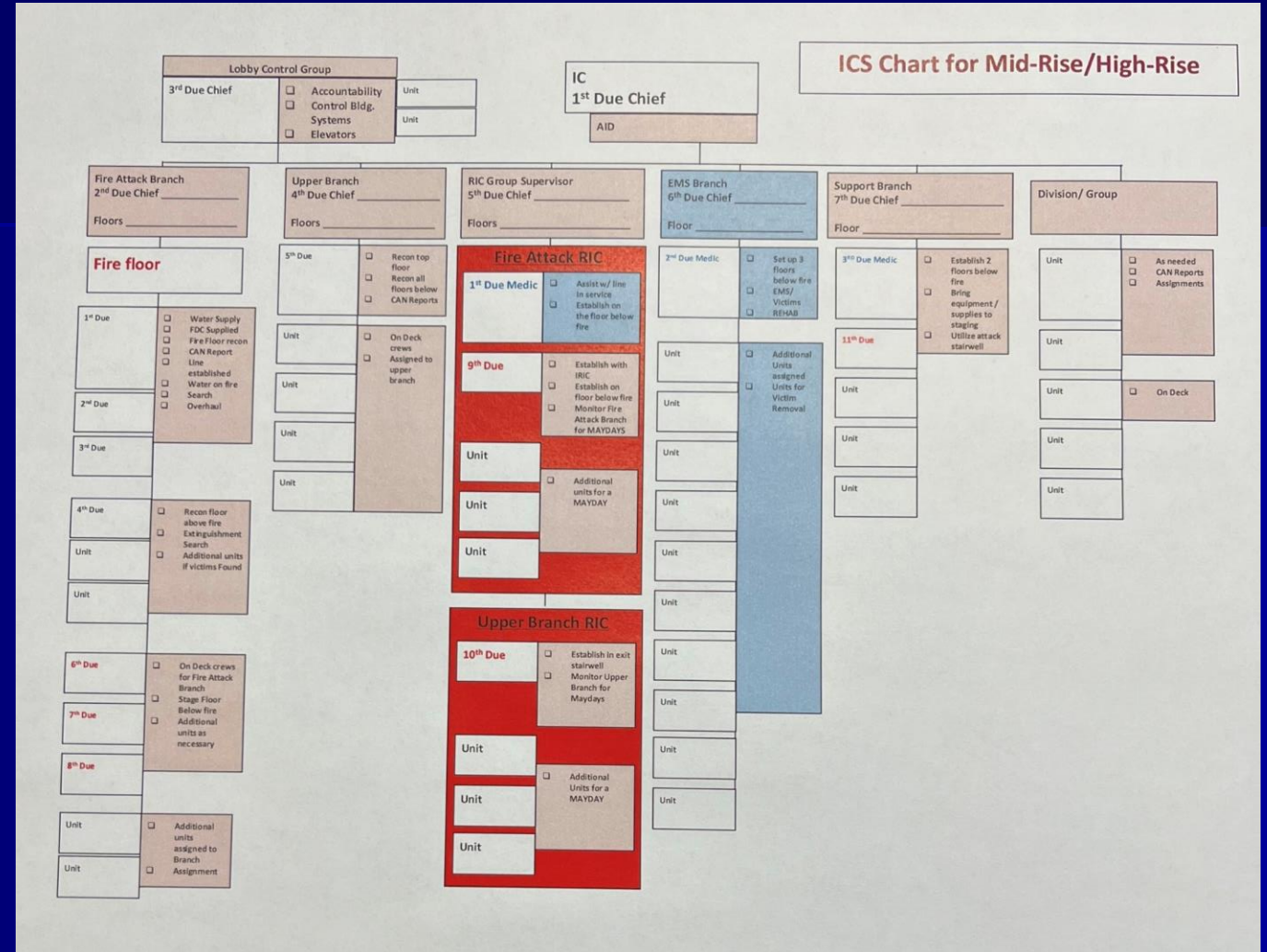
- 51 personnel on first alarm
  - 7 Engines (3 person staffing)
  - 5 Ladders (3-person staffing)
  - 3 Medics (2 person staffing)
  - 9 Chiefs (1 person Staffing)





# Organization

- Fire Branch
  - Fire Floor
  - Floor Below
  - Floor Above
- Upper Branch
  - 2 floors above fire to roof
- Lobby/Elevator/Systems Control
- Support
- Staging



# Priorities

- Fire Suppression
  - First 3 companies and 1<sup>st</sup> medic to put line in service
  - Crews break off to search fire floor
- Search and Evac in Upper Branch



# Significant Changes

- Much larger deployment upon initial dispatch
  - Smoke visible or fire prompts full structure fire response of 51 personnel
- Much larger integration of practices from neighboring departments
  - What we buy and do must be compatible with neighboring departments
- Many more job aids due to infrequency and use of mutual aid chiefs to fill command staff
- Continual need to train to retain muscle memory
  - Only fully used twice in 3 years

# Lessons Learned

- Needed to involve fire prevention much earlier in process
  - What they approve will significantly impact operations and equipment
- Need stronger legislation
  - Townships have less legal authority than cities
- Collaboration efforts among area departments paid dividends
  - Area Battalion Chiefs set up the trip to HROC, which was needed organizational level buy-in
  - Crews working together daily across borders aids in their working together on the larger events

# Contact Information

- Randall W. Hanifen, Ph.D., FIFireE
  - [Randall@hanifen.org](mailto:Randall@hanifen.org)
  - 1-513-266-6124