



Transforming Fire Safety with Digitalisation & AI Surveying & Contract Management

Global Vision for 2026





Andrew Cooper, Managing Director

Global HSE Group

Global Re Brand



Define Brand and subdivisions
Fire Safety Experts at Group Level
Breakdown Service Offering – Clear Defined Brands
GBE & Smoke Control



Who are Global HSE Group?



Passive Fire

Building Remediations & Fire Stopping

Fire Damper Installation & Maintenance

Fire Door Installation & Maintenance

Surveying & 3D Mapping

Ceasefire Doors

EI30 PAS 24 SBD Composite Fire Doors Range

Health & Safety

Health & Safety Consultancy Services

Fire Engineering

Fire Strategy

Fire Risk Assessment

RIBA Stage 0 - 7 Fire Scrutineering

EWI - External Wall Inspection FRAEW & EWS1 Forms

Fire Engineering Surveys & Modelling

Property Risk Latent Defects

Building Safety Cases

Building Safety Regulator Applications

Façade Remediation

Global Academy

ABBE Accredited Fire Door and Passive Fire Courses

ABBE Accredited Fire Safety Design Course

MEP Engineering

RIBA Stage 1-5 MEP Engineering Design

Building Information Modelling (BIM)

Utilities Assessment

MEP Scrutineering

Smoke Ventilation

EPC and Part L Compliance

Planning Services

Sustainability & Energy

The Wake-Up Call – Why This Matters

- Grenfell Tower Fire (2017): 72 lives lost
- Systemic failings in building safety
- Catalyst for new regulations: Fire Safety Act 2021 & Building Safety Act 2022
- Industry under scrutiny – property managers and landlords now legally accountable



The Wake-Up Call – Why This Matters

- Fire Safety Act 2021: Legal duty to assess and manage fire risk
- Building Safety Act 2022: Applies to high-rise residential buildings >18m
- Golden Thread requirement: Living digital record of fire and structural safety
- Role of the Accountable Person and Building Safety Regulator

The regulatory landscape - now a legal duty



- Ongoing challenges in completing FRA / FRAEW / Survey / Strategies / as Built data
- Siloed data and outdated systems hinder full visibility
- Regulatory pressure growing to provide real-time, auditable safety information
- Increasing complexity in managing high-rise residential safety across lifecycles

The Compliance Gap - Where we are today?



Why Traditional Systems Fall Short

- Manual, paper-based processes lack speed, traceability, and scalability
- **Disconnected records = missed risks**
- Difficulty proving compliance to regulators in real-time
- **Lack of foresight in risk detection and system failures**



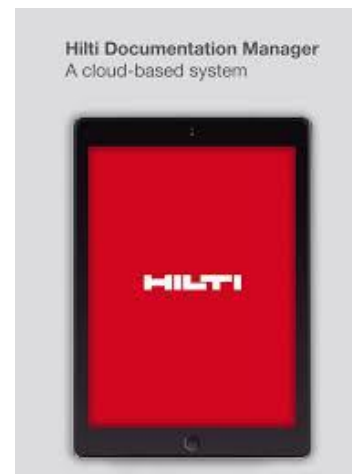


Current problems = SharePoint of PDFs & CSV Files



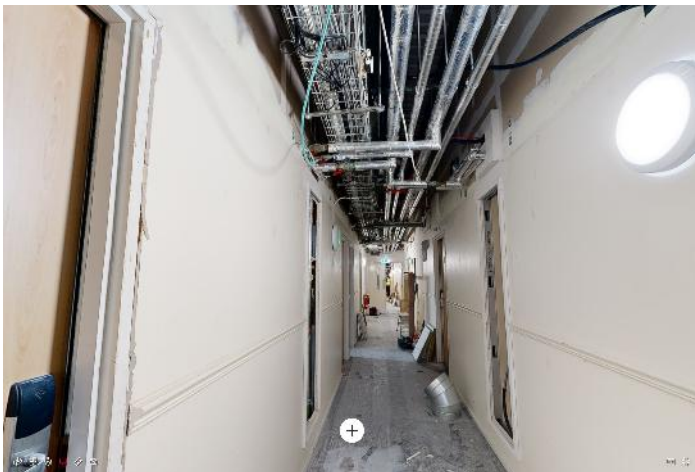
The Betamax Problem

Dangers of clever but closed formats
Global committed to open, accessible data
Cost + Tech Creep!



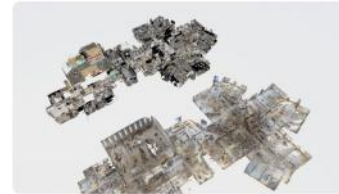
3D and 4D Digital capture via LiDAR Scanning

- Data capture is the foundation of the Golden Thread
- Surveys done right = structured, rich data
→ not static documents
- API compatible asset tagging



Next step: Time travel

From construction phases, to build-out to design, soon you'll be able to navigate between different versions of the same space within a single interface—essentially seeing through walls.



Look Back

See into past stages of construction, remodel, or redesign.



Look Inside

Seamlessly review the scans of mechanical, electrical, or plumbing as it was installed.

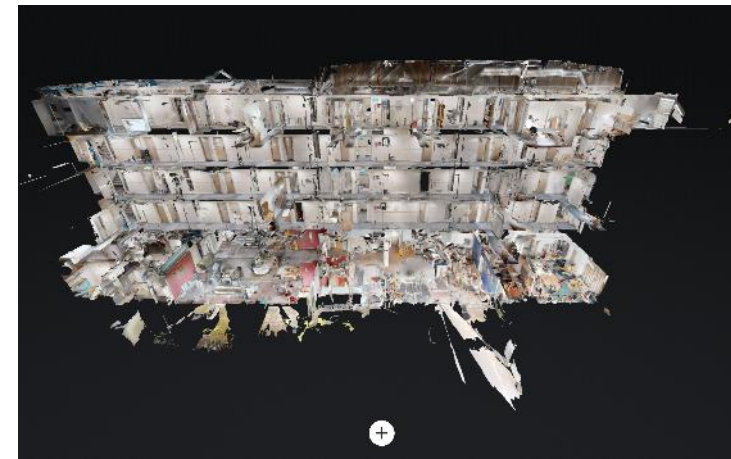


Look to the Future

Compare past, current, or even completely reimagined designs side by side.

Types of Digital Surveys We Use

- Matterport → point clouds → BIM models
- Photogrammetry
- Geotagged photography (GPS + time)
- NFC-enabled site inspections and remedial recording





Our Data Flow Principles

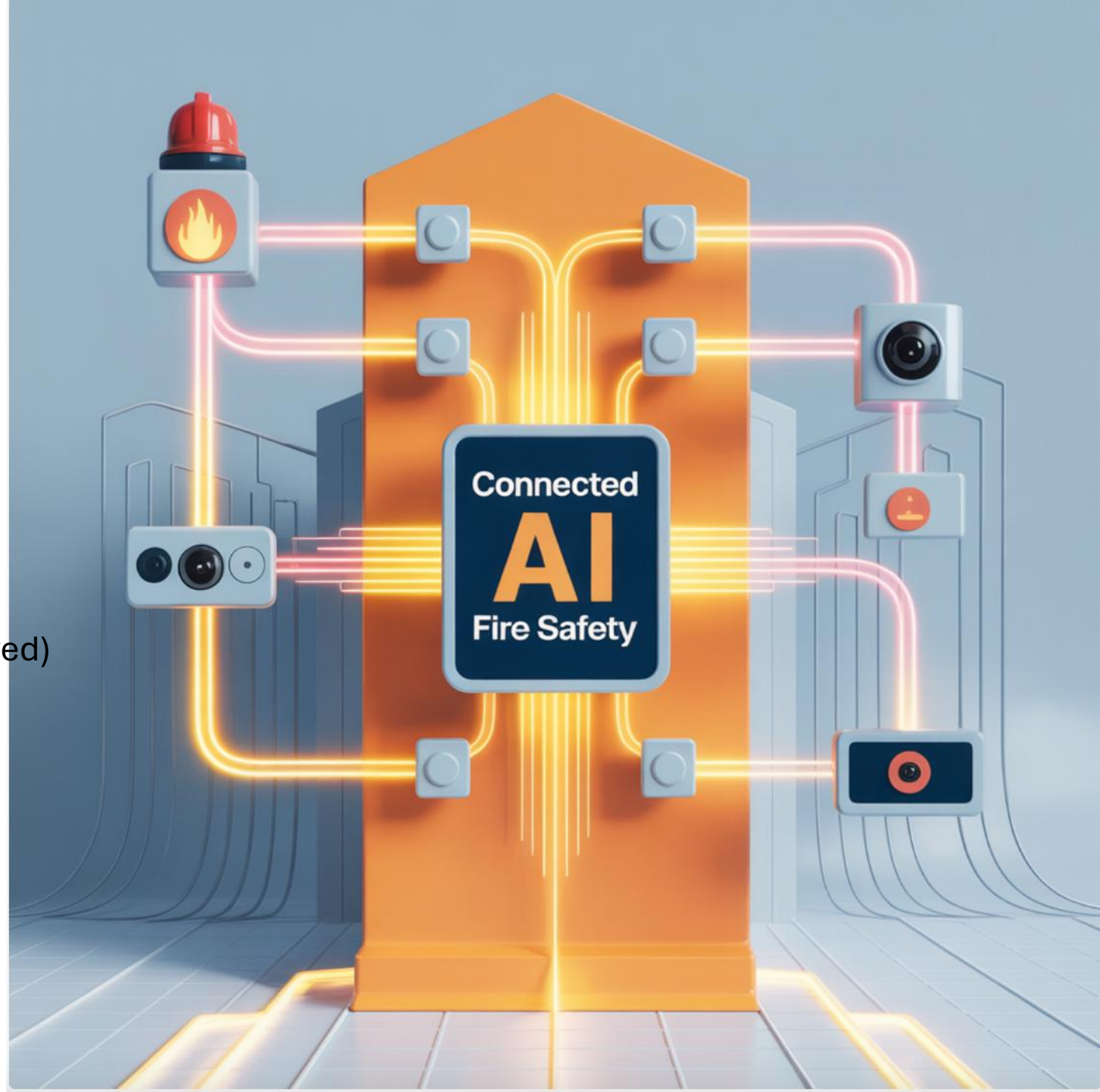
- Capture → Process → Structure → Share
- Emphasis on: Preserving metadata

Using open formats:

- Point clouds → E57
- Models → IFC + RVT
- Meshes → OBJ/PLY
- Photos → JPEG (with EXIF metadata preserved)
- Survey data → CSV/JSON
- ISO 42001 Ai Management Standard

Our Partners & API-driven Workflows

- CSN, RiskBase, Bolster, others
- Why APIs matter — enable data to flow into client systems seamlessly
- Global as facilitator, **not gatekeeper**





How We Add Value to Surveys

- Technical expertise → interpreting and enriching the data
- Contextualising it → making it usable for clients
- Not just handing over “boring pictures”

Global SKEB – ECO System

- Micro Learnings
- Psychometric testing and analysis
- Real time
- Time savings
- Knowledge sharing
- Travel & cost savings

A New Era of Fire Safety Management





Golden Thread Ready — But Not There Yet

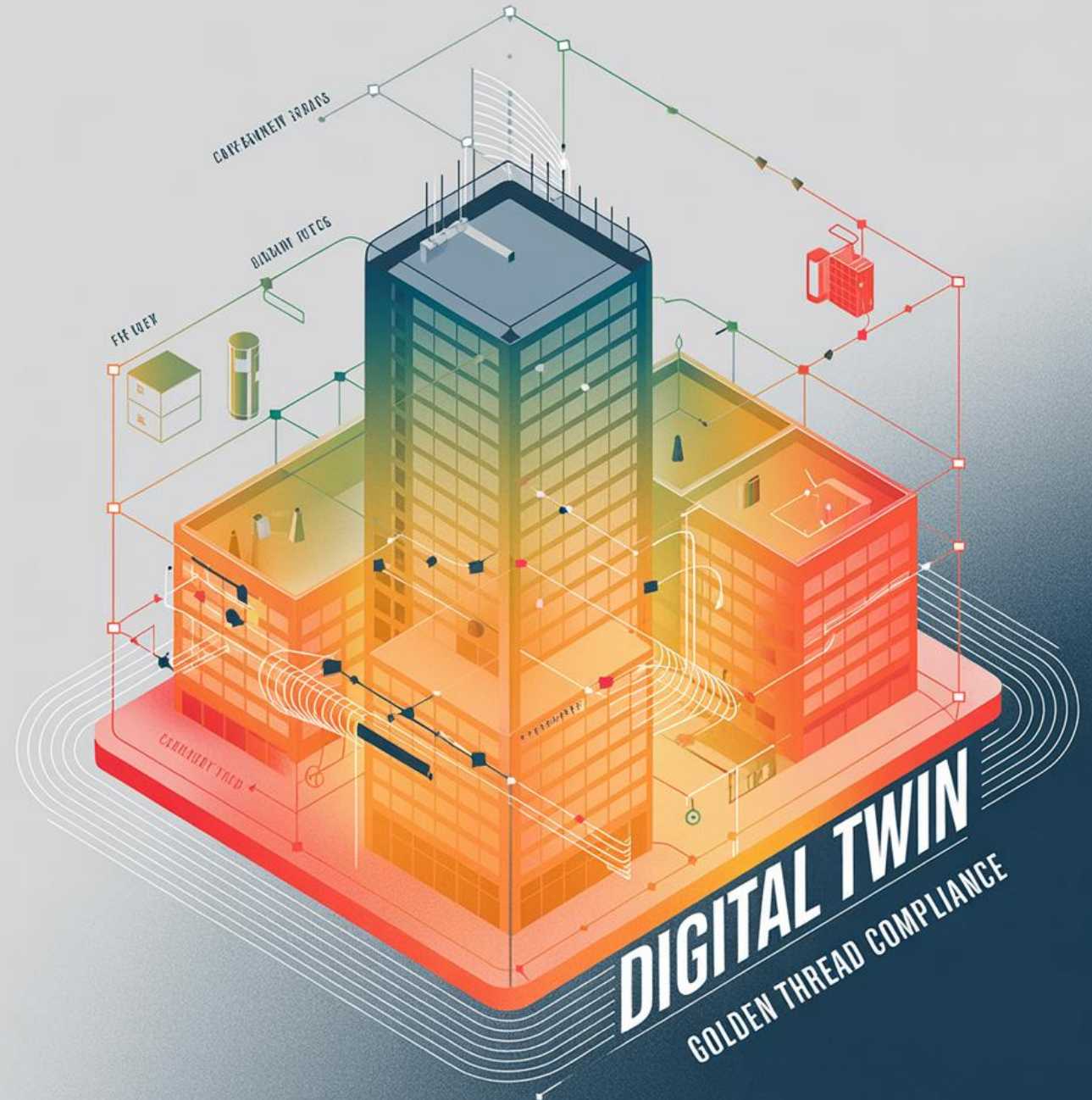
- There is no universal, fully adopted standard today
- Our approach: ensure data is structured, open, portable — ready for integration
- Metadata matters → GPS, time, audit trail → critical for future-proofing the record

Leveraging the Unrealised Value

- Expert oversight + rich data = opportunities ahead
- Moving toward live, connected systems
- Example vision:

BIM base model + IoT feedback → evolving Digital Twin

Real-time visibility of safety-critical systems



Future-Proofing Through Intelligence

- System evolves with regulations and new technologies
- Integration with drone scans, smart evacuation systems, visual analytics
- AI-driven dashboards give clarity across whole building portfolios
- Reduces risk, improves trust, and drives efficiency
- Digitised work flows - Onboarding, policies, SHEQ, Installations, QA & QC, Ordering & Labour/Resourcing, Sub C management. Vehicle/People/Plant tracking.
- Micro Learnings

SKEB – Behaviours HOW?

- SK via formal Quals
- Continuous psychometric analysis & testing

AI Powered Fire Safety





From Reactive to Proactive – The Vision

- Closing Messages
- Digital surveys are key to building a meaningful Golden Thread
- Open data, metadata, and integration are critical
- Global is focused on enabling value and interoperability — not locking clients into static systems
- Shifting from compliance checklists to intelligent oversight
- This is not just digital transformation – it's intelligent transformation

