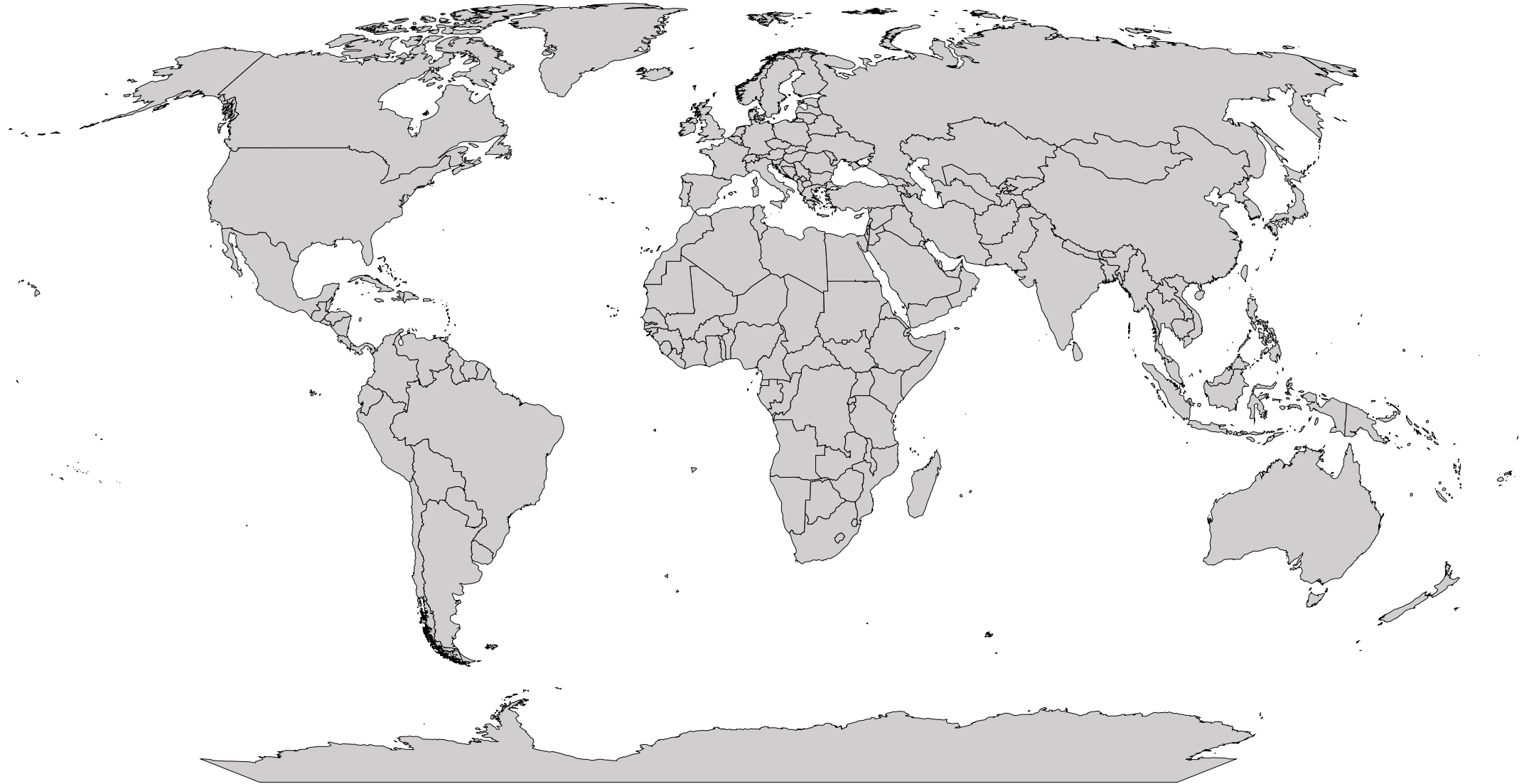


Preventive Fire Protection in High Rise Buildings in Frankfurt: From Concept to Realization



World map





Indianapolis



**Frankfurt am
Main**

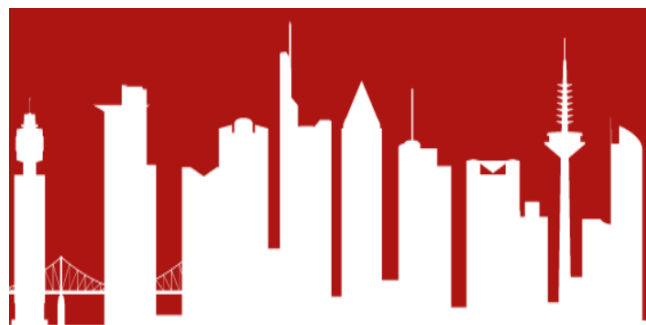
Frankfurt // in Numbers



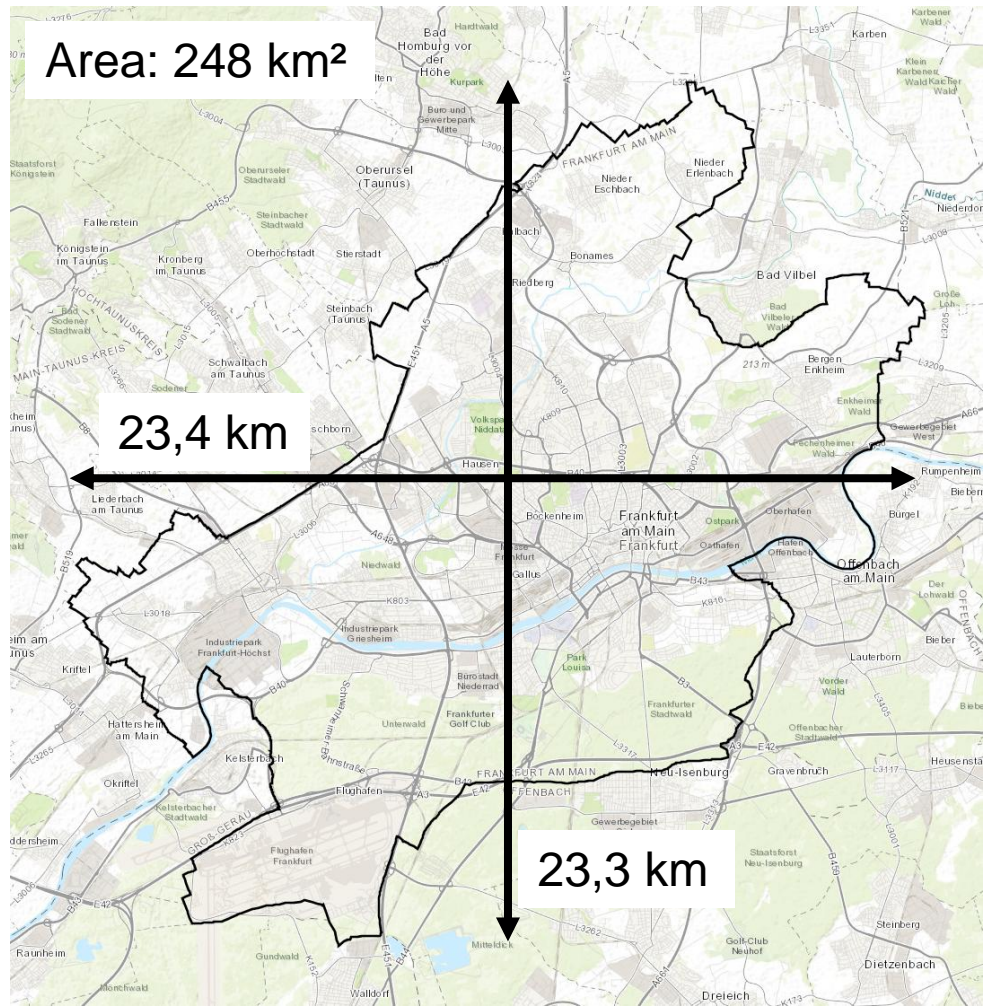
770.000 Inhabitants



390.000 Commuters



over 600 skyscraper



Size of the city

Fire and Rescue Service



**BRANDBE-
KÄMPFUNG**
// FIREFIGHTING

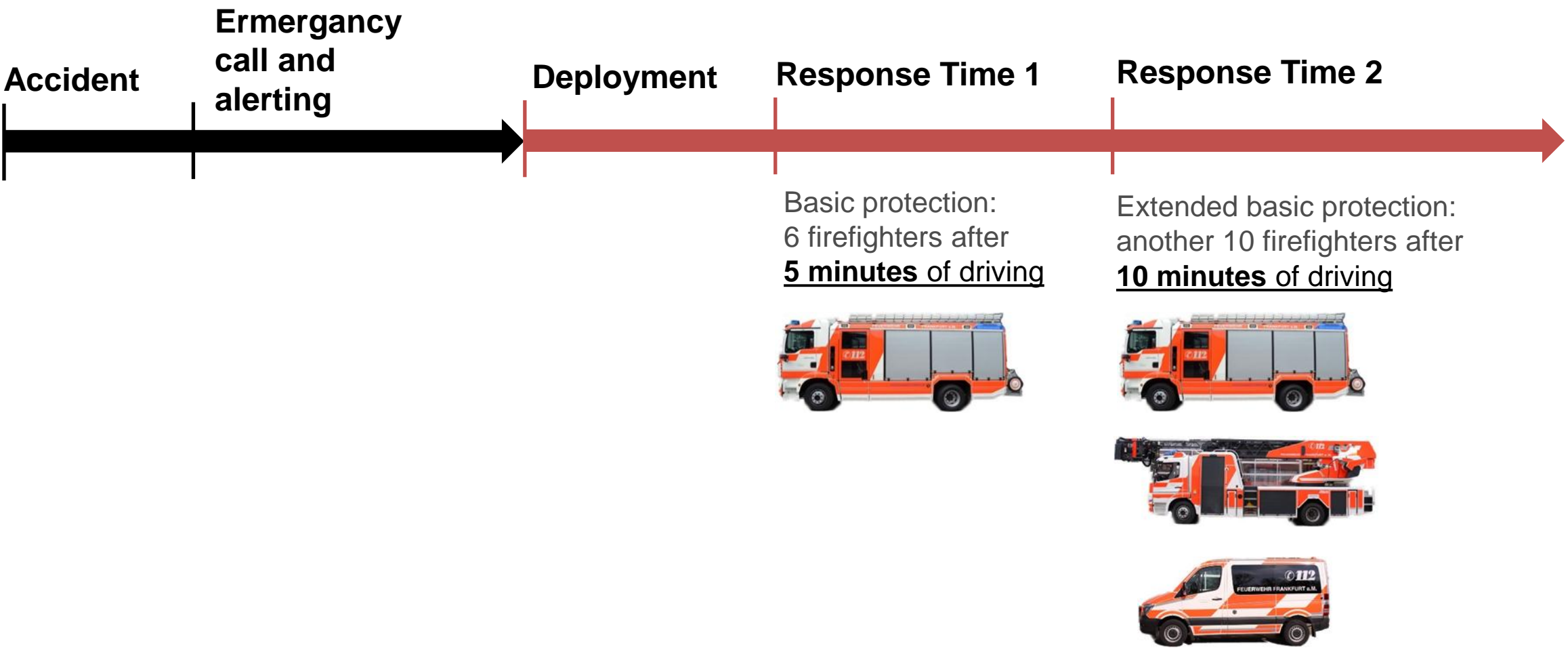
**RETTUNG BEI
UNFÄLLEN**
// HEAVY RESCUE

EINSATZLEITUNG
// INCIDENT
COMMAND

RETTUNGSDIENST
// EMERGENCY
MEDICAL SERVICE

LUFTRETTUNG
// HELICOPTER
EMERGENCY
MEDICAL SERVICE

Demensioning of the fire department

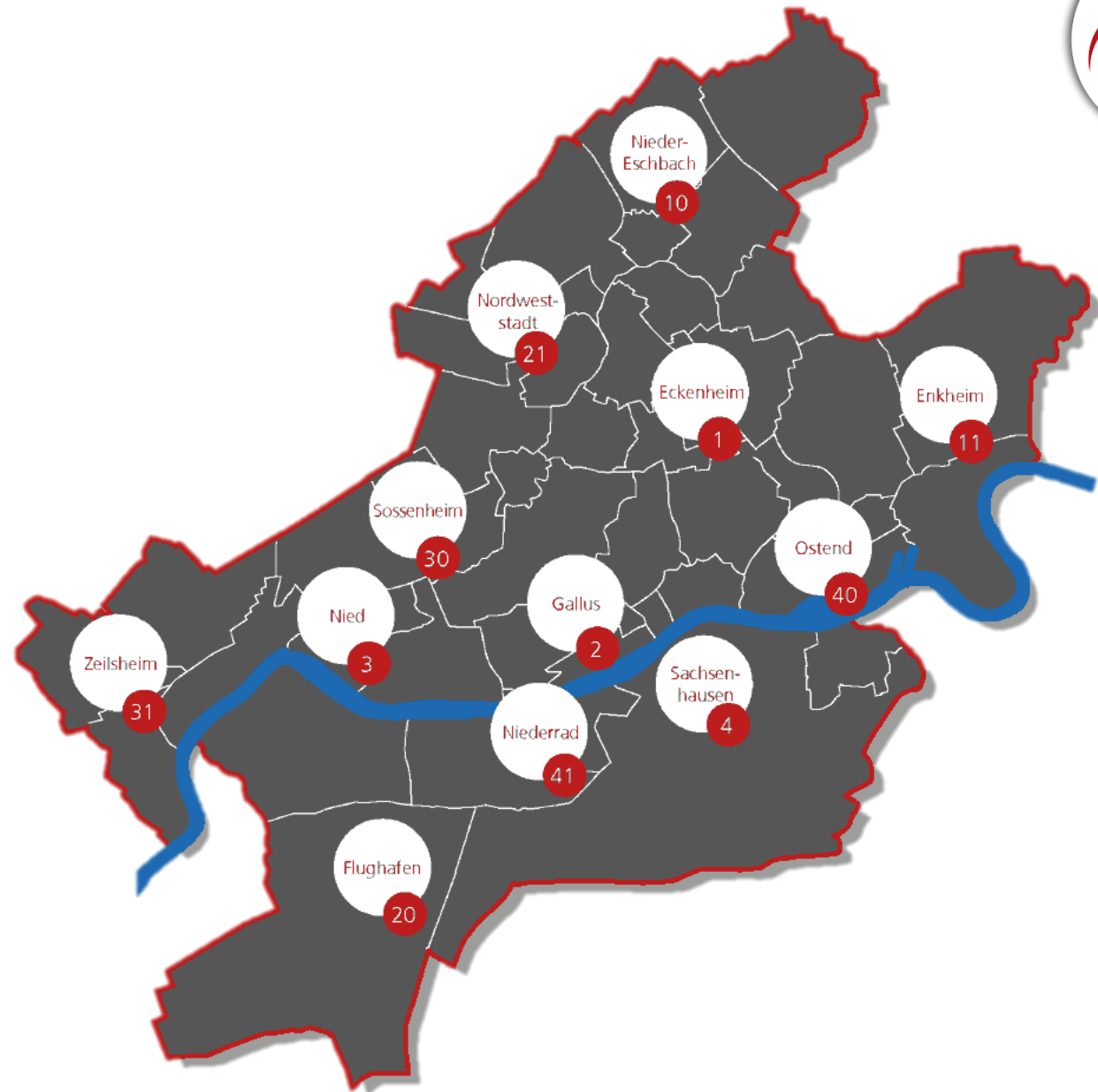


Frankfurt Fire Service

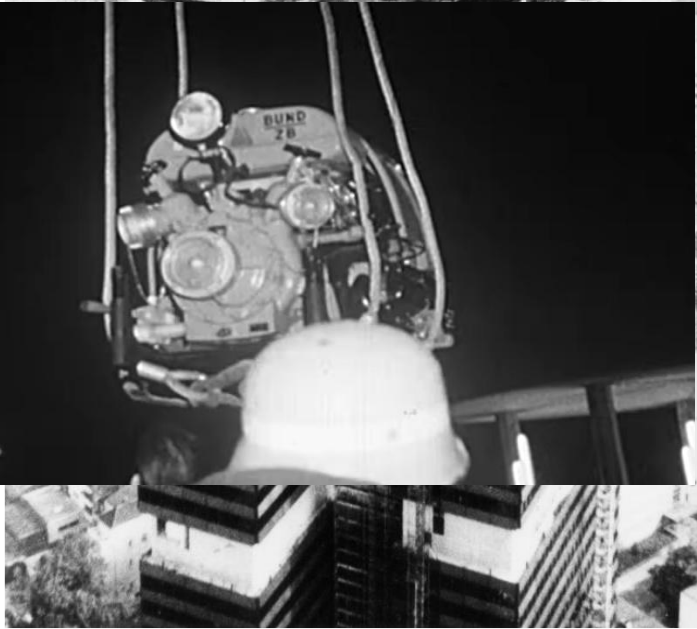
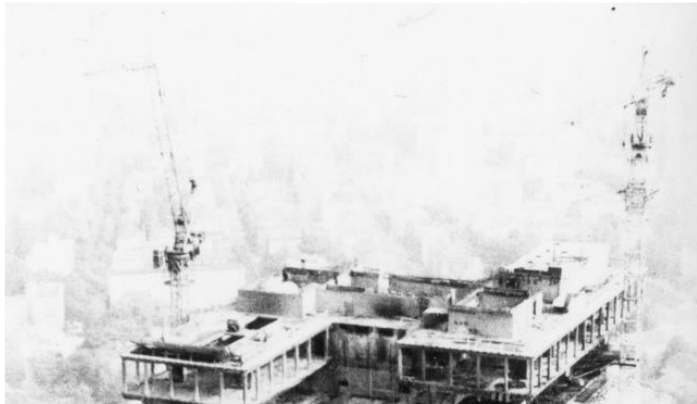
1000 professional firefighters at
12 fire stations

151 firefighters on duty around
the clock

900 volunteer firefighters in
28 volunteer fire brigades



First fire of a skyscraper in Germany - Selmi skyscraper



Prevention

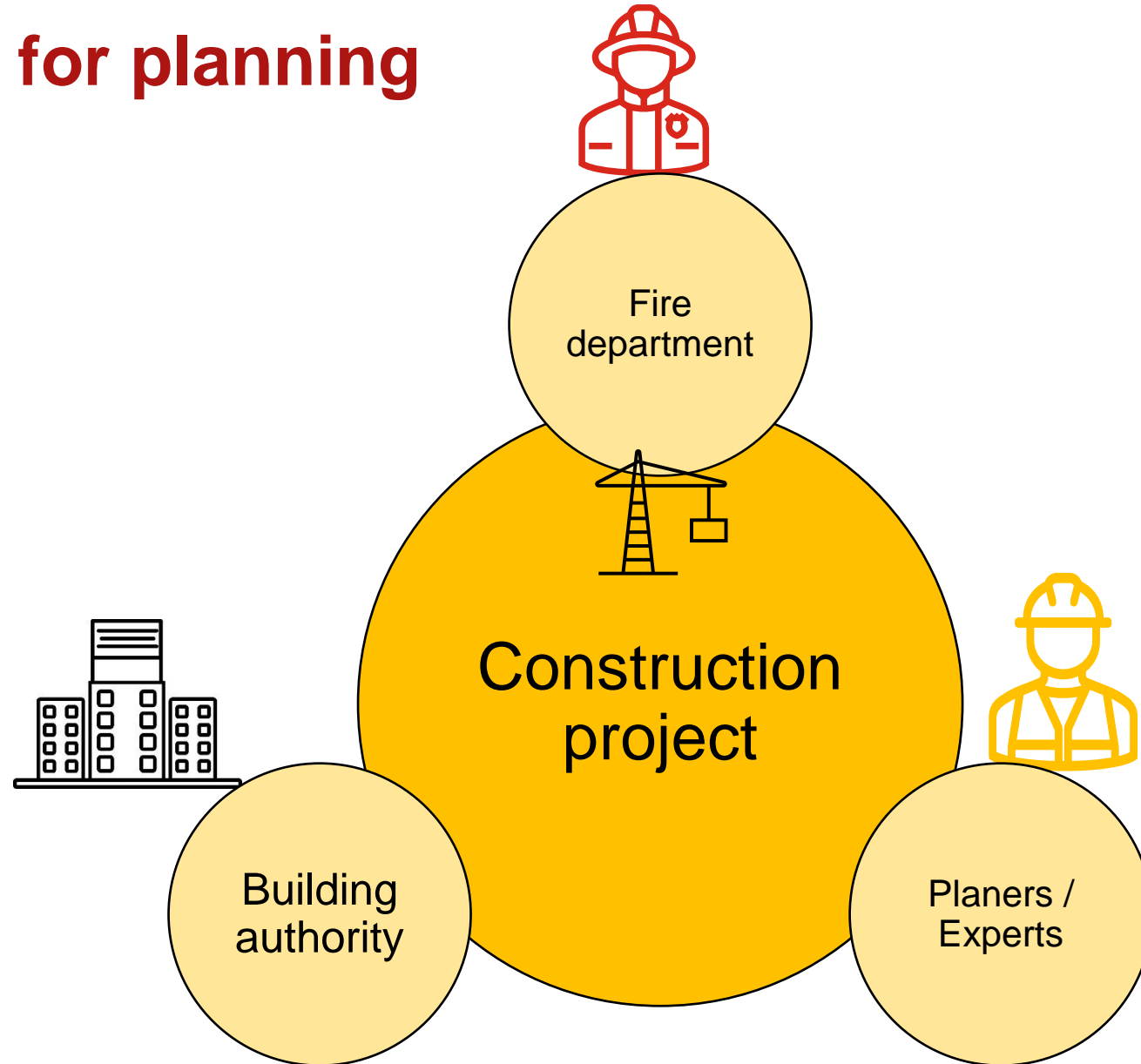


EINSATZKONZEPTE
// OPERATIONAL
CONCEPTS

**BERATUNG
VORBEUGENDER
BRANDSCHUTZ**
// PREVENTIVE FIRE
PROTECTION CONSULTING

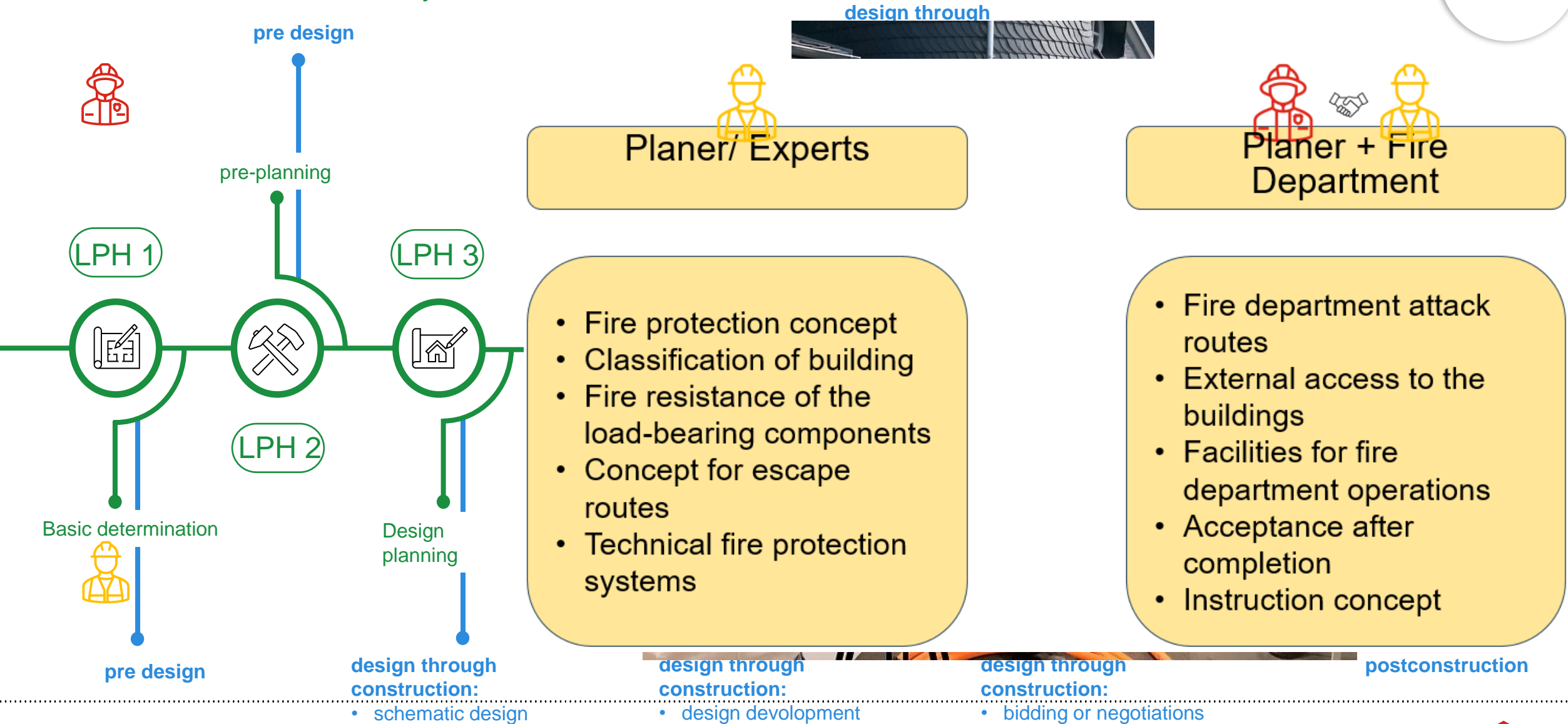
**VERANSTALTUNGS-
SICHERHEIT**
// EVENT SAFETY
AND SECURITY

Application for planning permission



Leistungsphasen (LPH) - Germany

AIA document B101 - US



Conclusion

- Early involvement of the fire department and close cooperation with the fire protection planners is important to ensure that our tactical requirements are taken into account.
- The fire department and the building are optimally coordinated for safe operation.
- Many buildings are challenging for the fire department. We have to explain to our colleagues how a building works from the perspective of preventive fire protection.
- E-learning allows the fire department to familiarize itself with the fire protection features of the building flexibly and remotely. Emergency services are well prepared and can act quickly in case of an incident.

Thank you very much for your attention.

